



Homelessness in New South Wales



28,191

Homelessness in NSW - Rate per 10,000 population



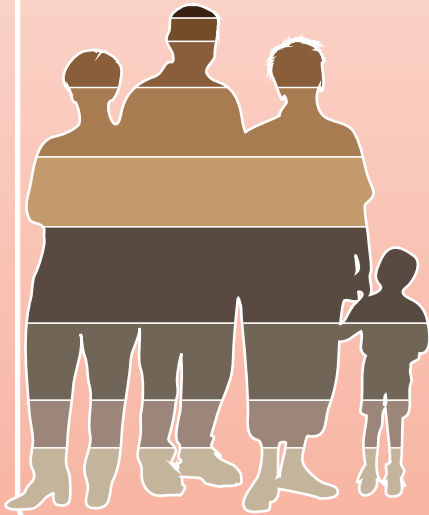
0 **48.9** National Average 200 400 600 800 1000

40.8 per 10,000

28,191 people are experiencing homelessness in NSW - more people than any other state.

How old are they?

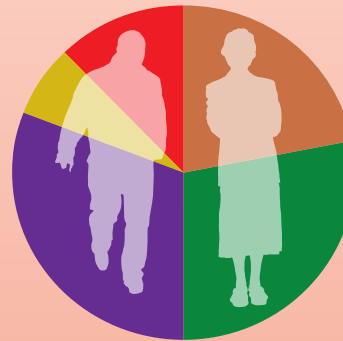
AS POPULATIONS AND PERCENTAGES



	NUMBER	%
Over 75	693	2.5
65-74	1283	4.6
55-64	2554	9.1
45-54	3859	13.7
35-44	3890	13.8
25-34	5361	19
19-24	4277	15.2
12-18	2642	9.4
Under 12	3632	12.9

Why are they homeless?

AS PERCENTAGES



Financial difficulties housing stress, unemployment	22
Accommodation issues housing crisis, inadequate or inappropriate dwellings	28
Domestic violence and relationship issues time out from family, family breakdown, violence and assault	31
Health reasons mental health issues, substance abuse issues	7
Other transition from care/custody, lack of support, discrimination	12

Where do they stay?

AS PERCENTAGES

	AS PERCENTAGES	National Average
Rough sleeping	7	6
Supported Accommodation for the homeless	18	20
Boarding Houses	23	17
Overcrowded dwellings	34	39
Staying with other households	18	17
Other temporary accommodation	1	1



Who are they?

AS POPULATIONS

Total: male 16,788, female 11,403



Sleeping rough: male 1,434, female 488



Specialist homelessness services:
male 2,448, female 2,479



REFERENCES

Australian Bureau of Statistics, *Census of Population and Housing: Estimating Homelessness*, 2012
 Australian Institute of Health and Welfare, *Specialist Homelessness Services 2012-13*, 2013



Homelessness Australia

Unit 2, 15 Hall St, Lyneham, ACT, 2602

www.homelessnessaustralia.org.au

Homelessness Australia

@HomelessnessAus